



**SHAPE THE  
WORLD OF  
TOMORROW  
WITH US  
TODAY!**

**UTEP  
COMPUTATIONAL  
SCIENCE**

Bell Hall, Room 117  
The University of Texas at El Paso  
500 W. University Avenue  
El Paso, TX 79968-0514



UTEP  
COLLEGE OF  
SCIENCE

**COMPUTATIONAL  
SCIENCE  
PROGRAM**

# WHAT IS COMPUTATIONAL SCIENCE?

Computational Science (CPS) is an interdisciplinary area where computation, mathematics, science and engineering, along with collaborative efforts, become a key combination to address complex research problems. With quantum computing on the horizon and current supercomputing capabilities, simulations can now be performed on what were previously unthinkable scales. The program produces graduates skilled in techniques such as mathematical modeling, algorithm design, computer simulation, scientific visualization, statistical mining of big datasets, and high-performance computing on parallel and distributed systems.

The University of Texas at El Paso (UTEP) offers studies leading to PhD or MS degrees in CPS. Due to the interdisciplinary nature of computational science across departmental and college boundaries, this endeavor is leading to an integrated knowledge base for effective solutions of complex and diverse scientific problems, where mathematical modeling, high-performance computing, and artificial intelligence play an imperative role.

Our CPS faculty have diverse expertise and interests in:

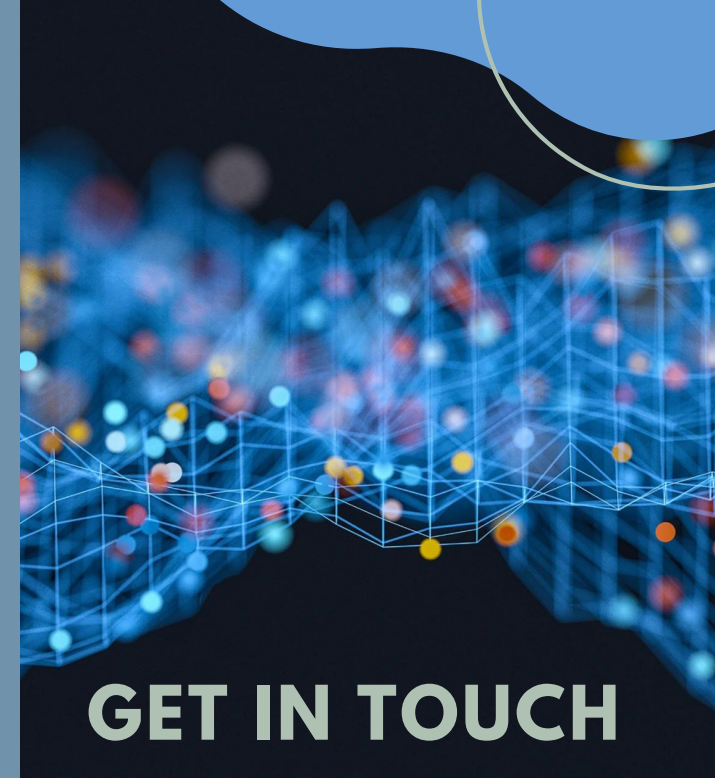
- Artificial Intelligence, Machine Learning, and Deep Learning
- Atmospheric and Environmental Sciences
- Bioinformatics and Computational Biosciences
- Computational Chemistry and Physics
- Computational Finance and Economics
- Disease and Epidemiological Modeling
- Fluid Dynamics and Solid Mechanics
- Geoscience and Subsurface Modeling
- High-Performance Computing
- Molecular Modeling and Molecular Dynamics
- Nonlinear and Hybrid Optimization
- Numerical Methods and Simulation
- Space Exploration Technology
- Statistical Computing and Big Data Mining

## ADMISSION REQUIREMENTS:

- BS or MS in any science, technology, engineering, and mathematics fields
- Academic transcripts
- TOEFL (for international students from non-English speaking countries)
- Statement of purpose
- Three recommendation letters

For admission to the program, candidates are expected to have sufficient skills in mathematics, natural sciences, and computer programming.

SCAN TO APPLY:



## GET IN TOUCH

### PROGRAM CONTACTS

Dr. Ming-Ying Leung  
Program Director  
(915)747-6836  
mleung@utep.edu

Ms. Jackie Fiest  
Assistant Director  
(915)747-6761  
jafiest@utep.edu



For additional information, please email us at:

[COMPUTATIONALSOURCE@UTEP.EDU](mailto:COMPUTATIONALSOURCE@UTEP.EDU)